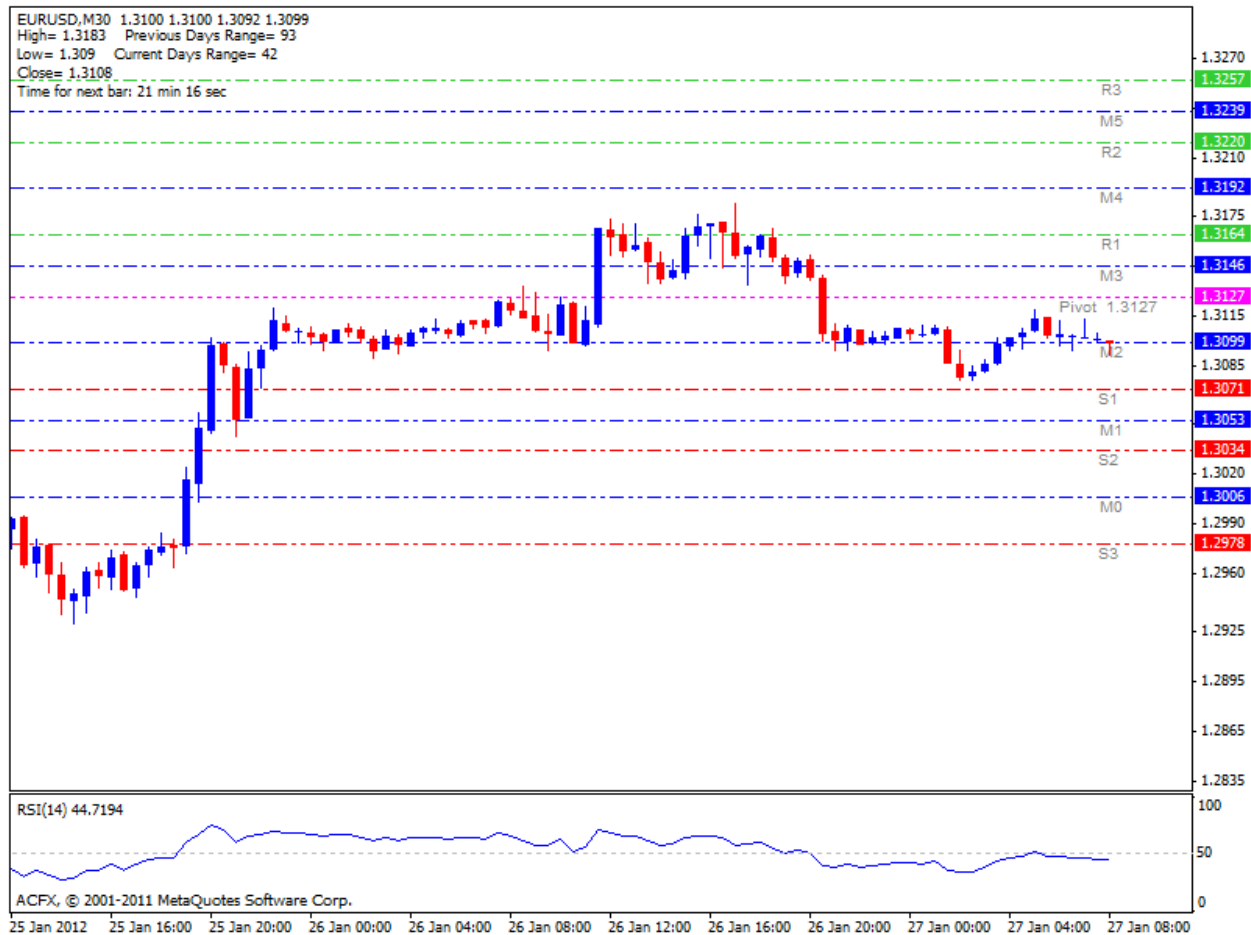


Daily Technical Analysis

27/1/2012, 07:00 (GMT)

EUR USD



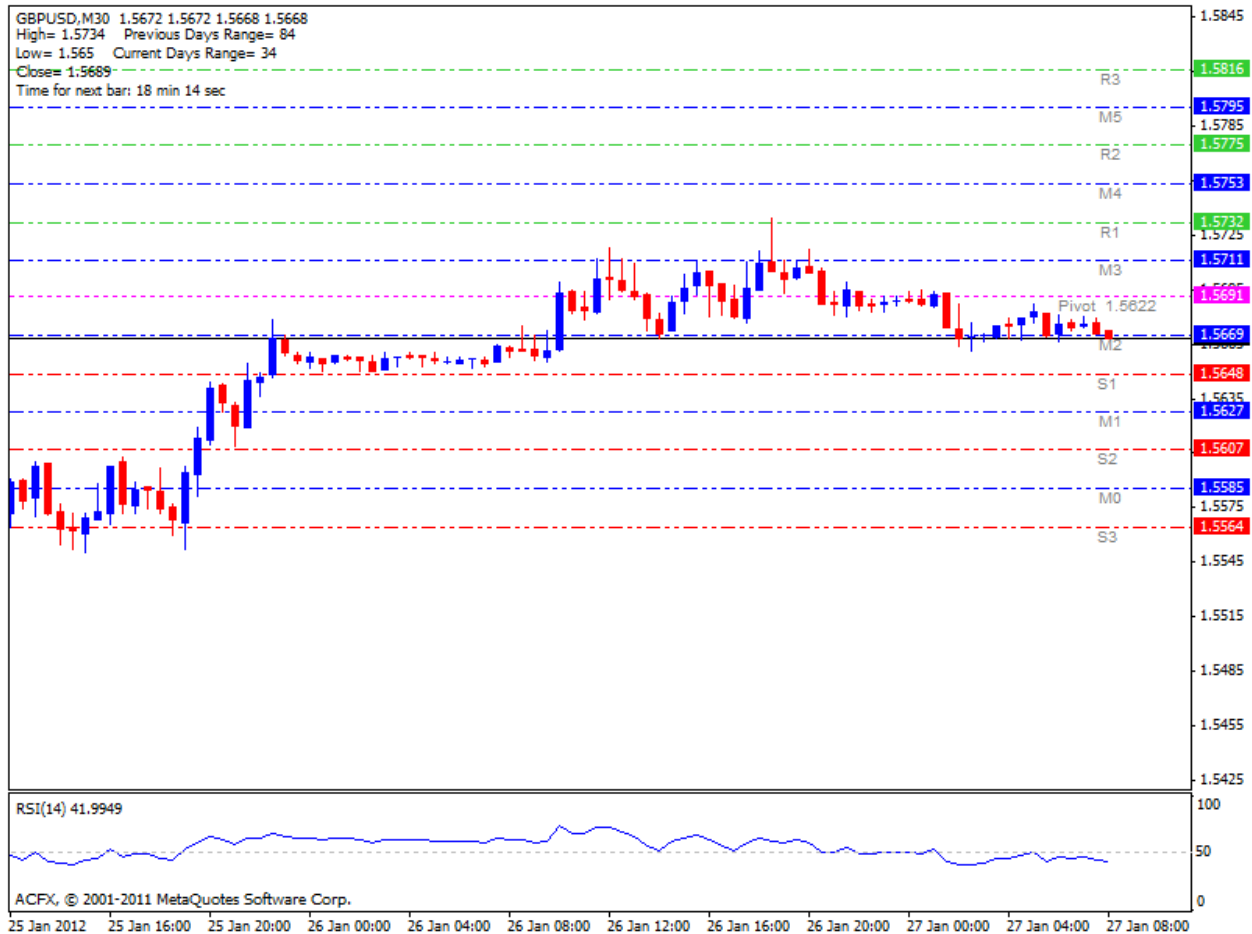
TREND: Upward

S3	S2	S1	Pivot	R1	R2	R3
1.2978	1.3034	1.3071	1.3127	1.3164	1.3220	1.3257

Comments

- RSI is around 50.
- Bollinger Bands are pointing Upwards.

GBP USD



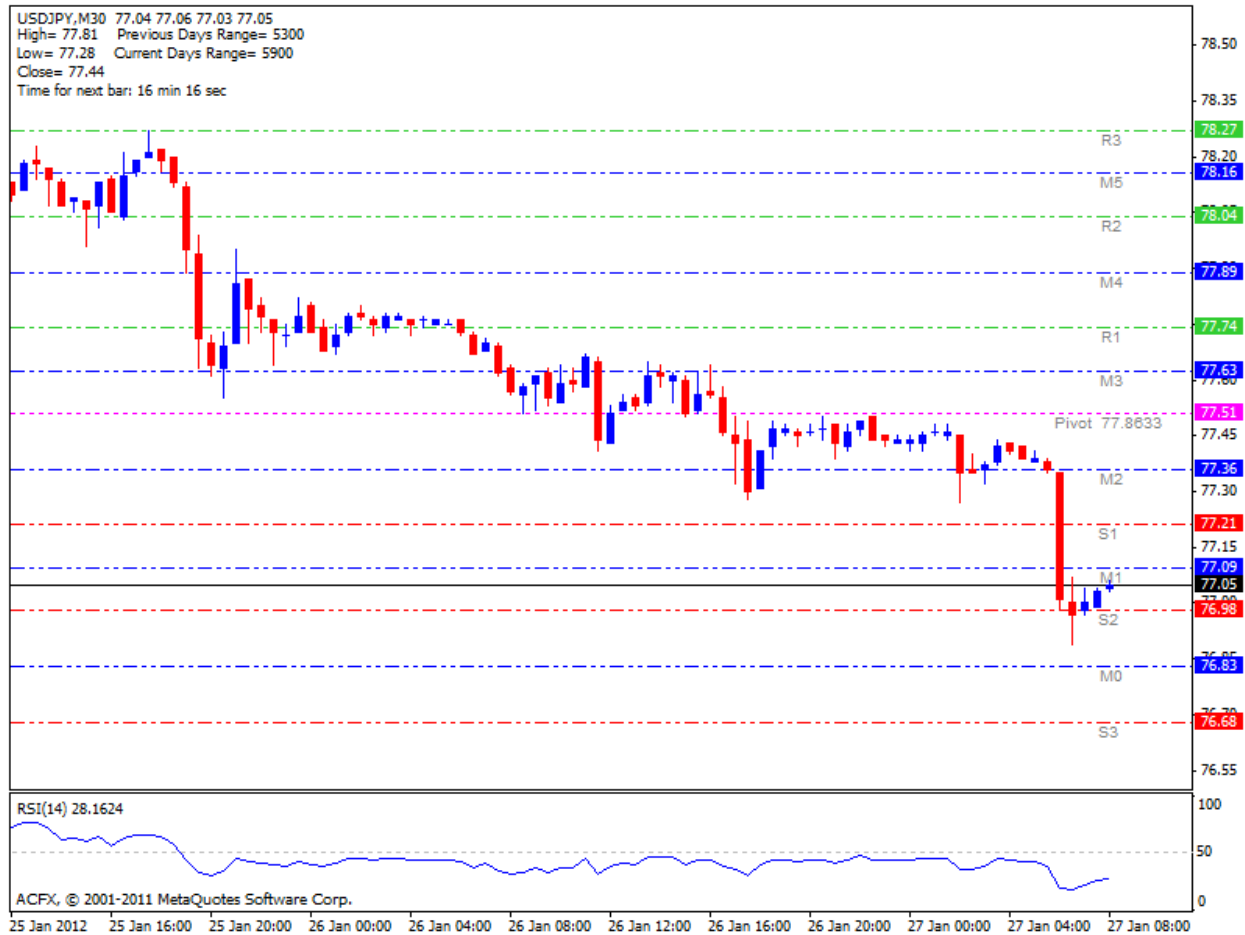
TREND: Upward

S3	S2	S1	Pivot	R1	R2	R3
1.5564	1.5607	1.5648	1.5691	1.5732	1.5775	1.5861

Comments

- RSI is around 50.
- Bollinger Bands are pointing Upwards.

USD JPY



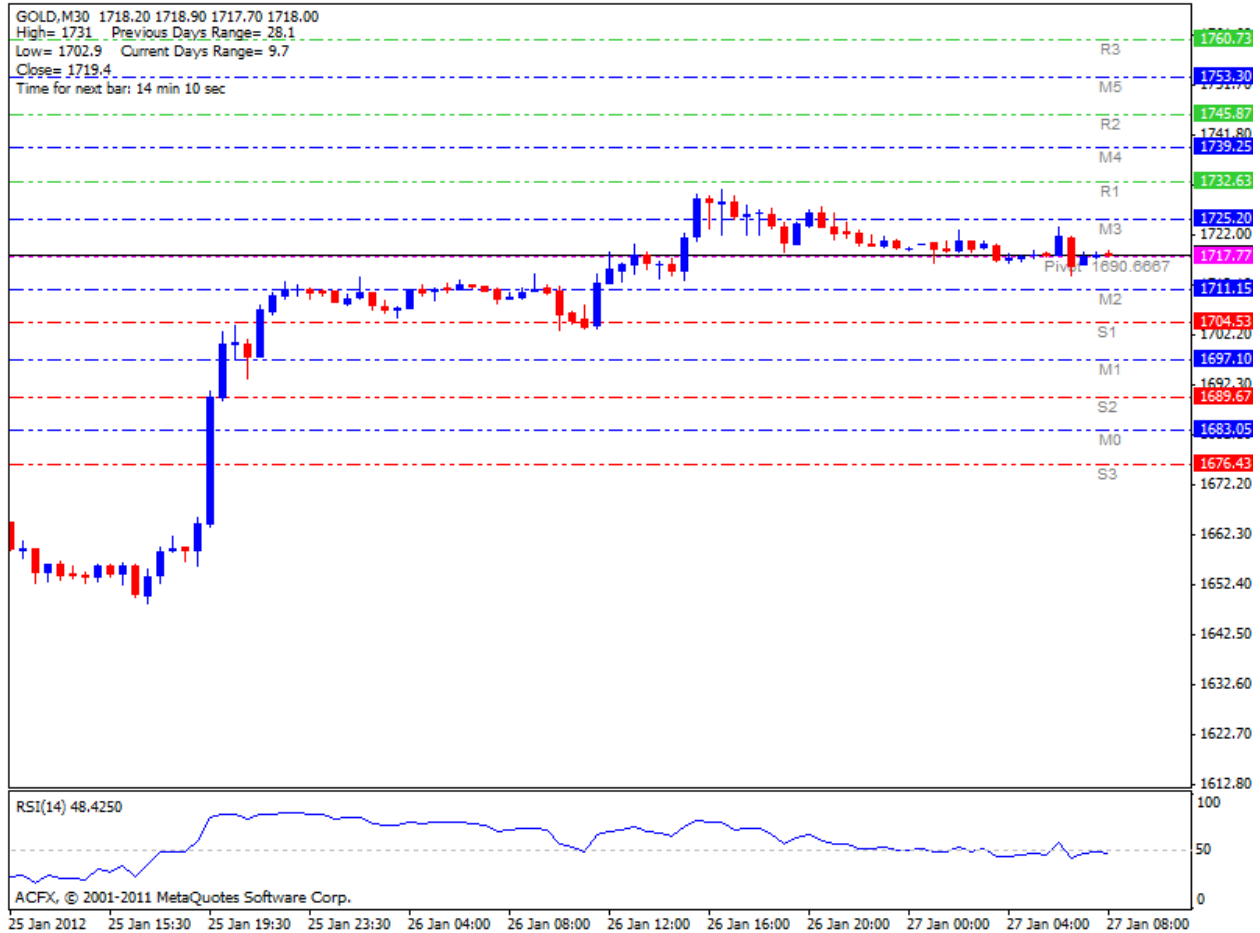
TREND: Downward

S3	S2	S1	Pivot	R1	R2	R3
76.68	76.98	77.21	77.51	77.74	78.04	78.27

Comments

- RSI is below 50.
- Bollinger Bands are pointing Downwards.

GOLD



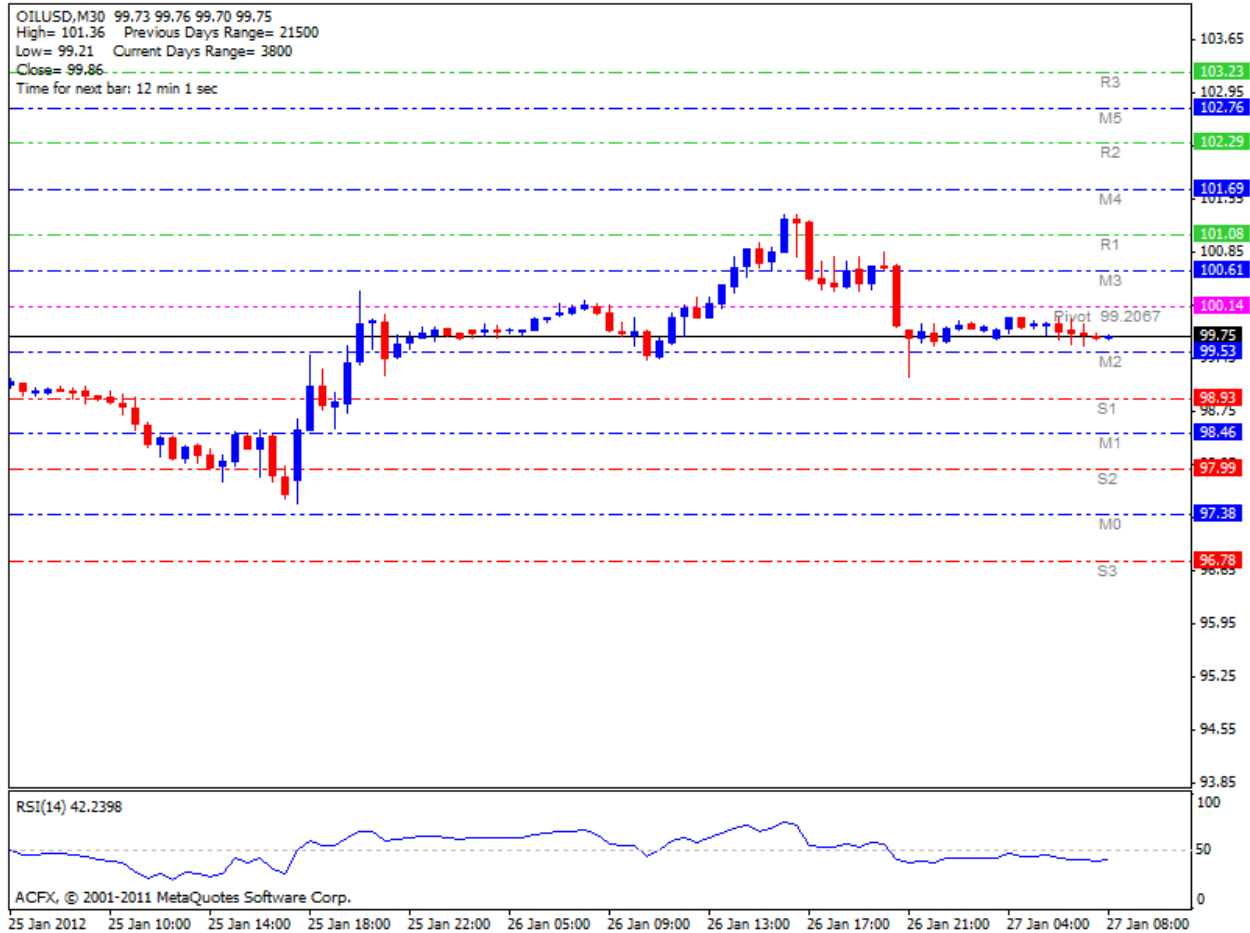
TREND: Upward

S3	S2	S1	Pivot	R1	R2	R3
1676.43	1689.67	1704.53	1717.77	1732.63	1745.87	1760.73

Comments

- RSI is around 50.
- Bollinger Bands are pointing Upwards.

OIL USD



TREND: Upward

S3	S2	S1	Pivot	R1	R2	R3
96.78	97.99	98.93	100.14	101.08	102.29	103.23

Comments

- RSI is around 50.
- Bollinger Bands are pointing Upwards.

Disclaimer

CFD's are leveraged products and carry a high degree of risk. As such they may not be suitable for all investors. Investors should ensure they fully understand the risks associated with CFD trading before deciding to trade. Investors may choose to seek independent advice and should not risk more than they are prepared to lose. The information in this report is for educational purposes only, and should not be taken as an investment advice. ACFX will not be liable for any losses incurred due to the use of all or part of the information provided above.



AtlasCapital Financial Services Ltd
Regulated by the Cyprus Securities and
Exchange Commissions.
License No: CIF 085/07

ATLAS HOUSE | 19 Promachon Eleftherias | P.O Box 54293 | Agios Athanasios | 4103 Limassol | Cyprus

www.ACFX.com